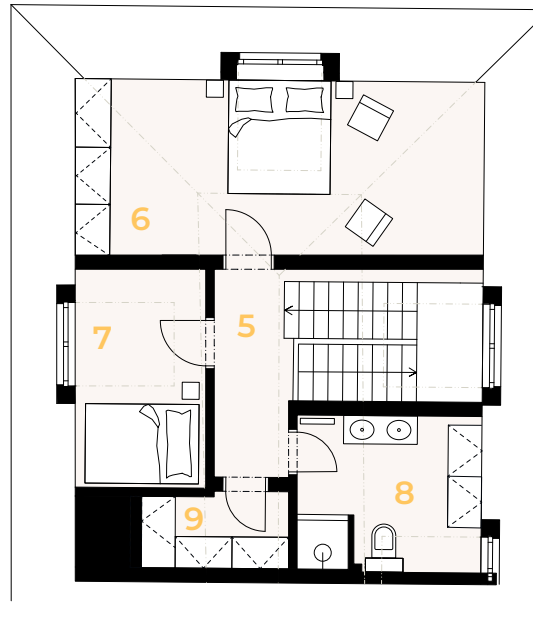
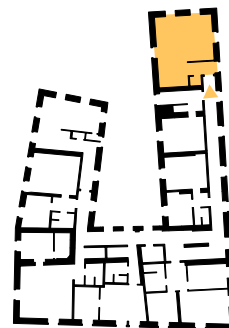


2<sup>nd</sup> floor



attic



## Apartment 5

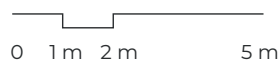
**Layout** 3bdrm  
**Floor** 2<sup>nd</sup>, attic

1	Entrance hall	5.80 sq. m.
2	Living room/kitchen	49.70 sq. m.
3	Toilet	1.60 sq. m.
5	Staircase and hallway	12.50 sq. m.
6	Bedroom	21.20 sq. m.
7	Bedroom	8.80 sq. m.
8	Bathroom and toilet	8.80 sq. m.
9	Wardrobe	4.90 sq. m.

**Usable area** 113.30 sq. m.  
**Floor area\*** 119.30 sq. m.

4	Balcony	5.70 sq. m.
	Cellar storage unit	7.90 sq. m.

**Total area** 132.90 sq. m.



\*The Bílá Růže Residence project reserves the right to make any changes. All materials and information stated herein are purely indicative in nature. The apartments are sold unfurnished. Floor areas include the areas of partition and load-bearing walls according to government regulation 366/2013 Coll.

EXCLUSIVE REPRESENTATION

svoboda&williams | CHRISTIE'S  
INTERNATIONAL REAL ESTATE

Na Zátorce 1, 160 00, Praha 6  
+420 257 328 281

rezidencebilaruze.cz info@rezidencebilaruze.cz